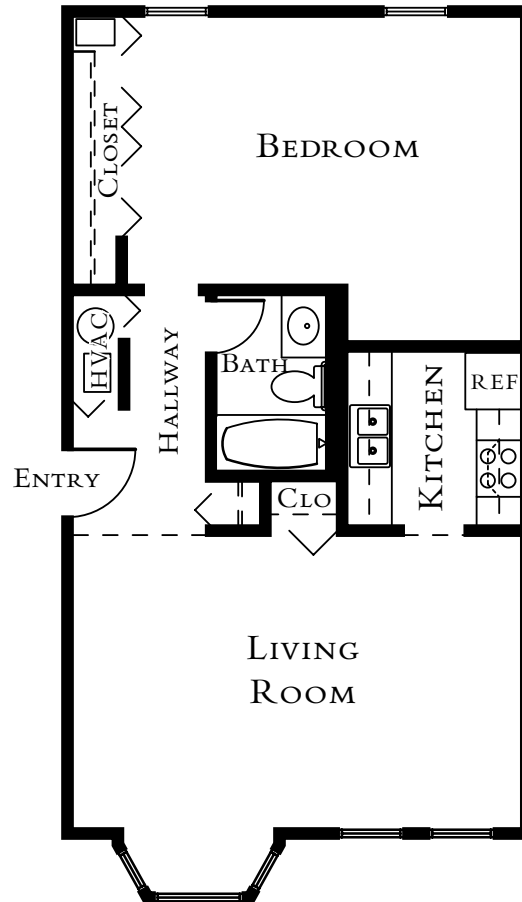


The Hawthorn

Beds: 1
Baths: 1
Sq. Feet: 732



Apartment Homes Features

- Updated Interiors with Six-panel Doors, Resurfaced Countertops, New Vinyl Floors and Designer Two-Tone Paint Scheme with Accent Wall
- Five Unique One and Two-bedroom Floorplans with Large Bay Windows, Spacious Rooms and Closets
- Kitchens with Full-size Electric Appliances including Microwave, Dishwasher and Garbage Disposal
- Wall-to-wall Carpeting, Ceiling Fans and Mini Blinds in Every Home
- Central Air Conditioning and Heat
- Cable Ready
- Patios on Select Apartment Homes

1115 Carr Street | St. Louis, MO 63101 | Phone: 314-231-6806 | CourtyardsAtCityside.com

